

# FLUKE®

## T5-600/T5-1000

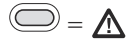
### Electrical Tester

#### Instruction Card

#### ⚠ Warning

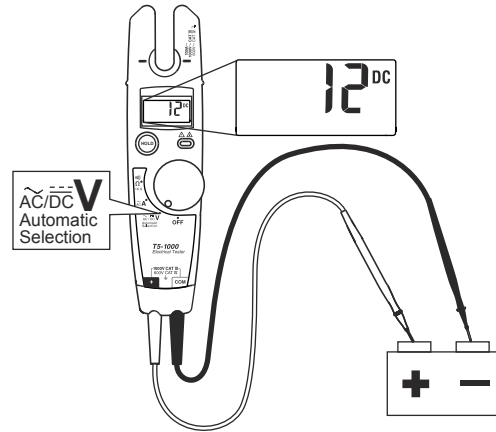
- Read the T5-600/T5-1000 Safety Sheet before using this tester.
- Před použitím této zkoušečky si přečtete bezpečnostní informace k modelu T5-600/T5-1000.
- Przed użyciem próbnika należy przeczytać instrukcje dotyczące bezpieczeństwa zamieszczone w dokumencie T5-600/T5-1000.
- Перед использованием данного измерительного прибора прочтите Инструкции по технике безопасности T5-600/T5-1000.
- Bu test cihazını kullanmadan önce T5-600/T5-1000 Güvenlik Broşürü'nü okuyun.

### Voltage Indicator



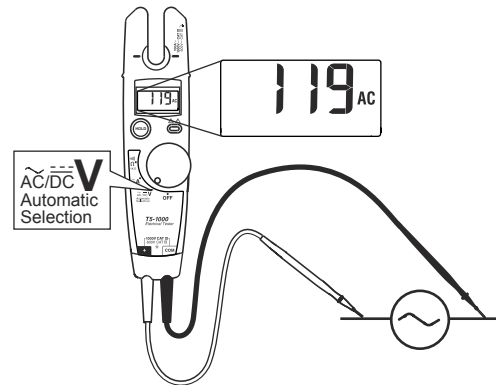
⎓ V

T5-600 max: 600 V CAT III  
T5-1000 max: 1000 V CAT III, 600 V CAT IV

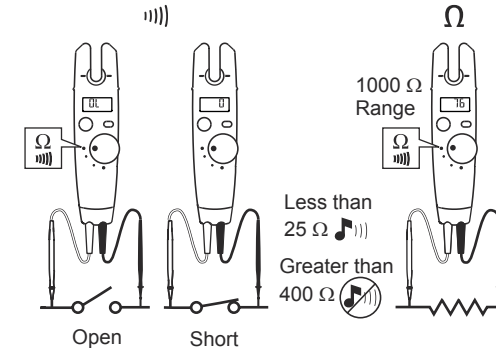


≈ V

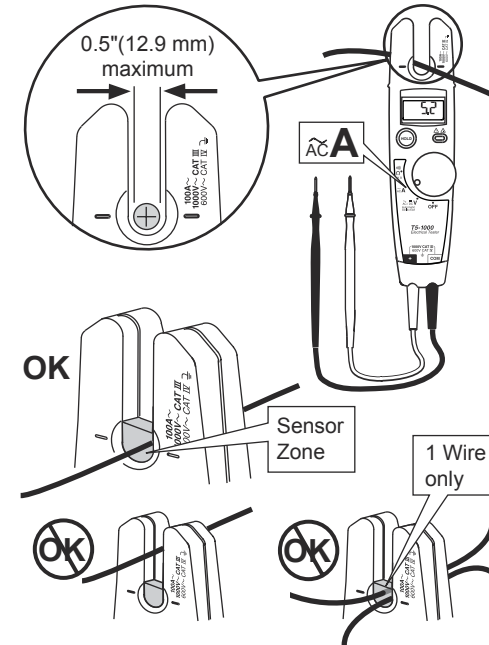
45 Hz - 66 Hz  
T5-600 max: 600 V rms CAT III  
T5-1000 max: 1000 V rms CAT III, 600 V rms CAT IV



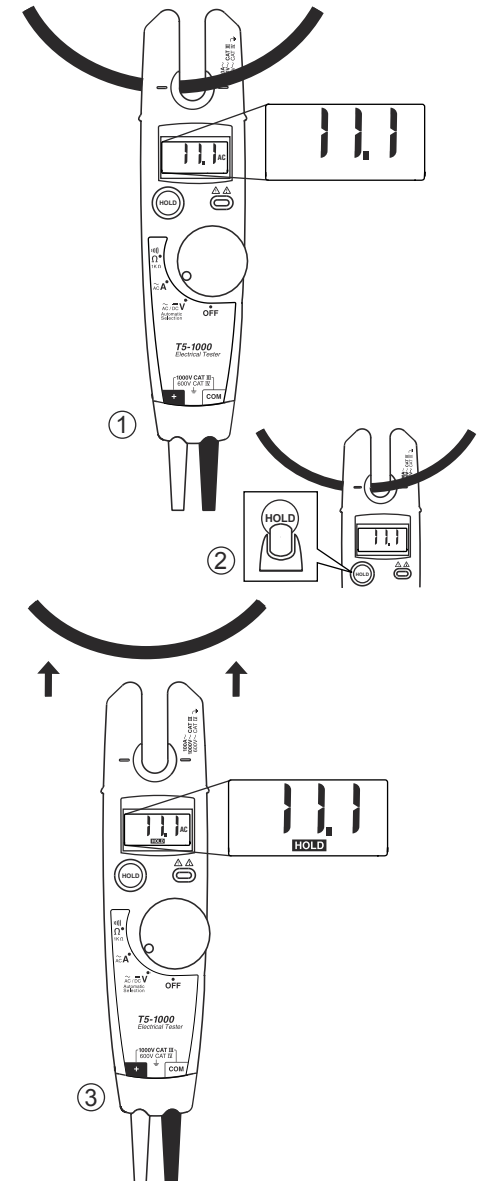
### Continuity & Resistance Ω



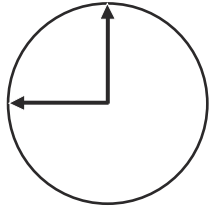
~A



### Display HOLD

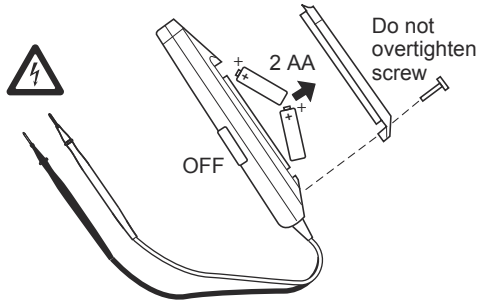


## Auto Off



45 min

LO +



## Warning

- Disconnect test leads from power source before opening battery door.
- Před otevřením krytu baterie odpojte od zdroje napájení měřící přívody.
- Przed otwarciem wnęki baterii należy odłączyć przewody testowe od źródła zasilania.
- Перед тем как открыть крышку батарейного отсека, отсоедините измерительные провода.
- Pil караğını açmadan önce test iletkenlerinin güç kaynağıyla bağlantısını kesin.

## Specifications

Specifications subject to change without notice.

<b>Calibration</b>	1-year calibration cycle
<b>Temperature Operating:</b> <b>Storage:</b>	-10 °C to +50 °C (14 °F to 122 °F) -30 °C to +60 °C (-22 °F to +140 °F)
<b>Altitude Operating:</b> <b>Storage:</b>	2000 m (6562 ft) 10,000 m (32808 ft)
<b>Relative Humidity</b>	0 % to 95 %, 5 °C to 30 °C (41 °F to 86 °F); 0 % to 75 %, 30 °C to 40 °C (86 °F to 104 °F); 0 % to 45 %, 40 °C to 50 °C (104 °F to 122 °F)
<b>Battery Type and Life</b>	AA (2); 360 hours continuous with alkaline; 125 hours continuous with zinc chloride
<b>RF Field Specification</b>	0.5 % full scale + (specified accuracy) at 3 V / m
<b>Enclosure Rating</b>	IP 52 per IEC 60529, no vacuum applied
<b>Safety</b>	Complies with ANSI/ISA-S82.01-94, UL classified to IEC 61010, CSA/CAN C22.2 No.1010.1-92, and EN 61010-1: 1995.
<b>EMC</b>	EN 61326
<b>Temperature coefficient</b>	0.1 x (specified accuracy) / °C for <18 °C or >28 °C (< 64.4 °F or > 82.4 °F)
<b>Accuracy</b>	± ( [ % of reading ] + [ number of least significant digits ] ) Accuracy is specified for 1 year after calibration, at 18 °C to 28 °C (64 °F to 82 °F) with relative humidity to 90 %. AC conversions are ac-coupled, average responding, and calibrated to the rms value of a sine wave input.
CAT III protects against transients in a <i>fixed equipment installation</i> such as a distribution panel, and lighting systems in large buildings.	
CAT IV protects against transients from a <i>primary supply</i> such as an electricity meter or an overhead or underground utility service.	

Function	T5-600 Range	T5-1000 Range	Resolution	Accuracy
V̄	600 V rms	1000 V rms	1 V	± (1.5 % + 2 digits)
V̄	600 V	1000 V	1 V	± (1 % + 1 digit)
Ā	100.0 A	100.0 A	0.1 A	± (3 % + 3 digits)
	1000 V CAT III 600 V CAT IV			
Ω	1000	1000	1	± (1 % + 2 digits)

<b>Certifications:</b>	CE	SR	UL CLASSIFIED In accordance with IEC 61010-1, 54CJ
------------------------	----	----	---

## Replacement Parts

Test Lead Assembly. Replace only with Fluke double-insulated leads (□). See "Accessories" for available probes.	PN 648029
Battery Door	PN 2091779
Battery Door Screw	PN 1618578

## Accessories

H5 Belt Holster  
TP1 Probe Set, Flat-Blade  
AC285 SureGrip™ Alligator Clips  
AC220 SureGrip™ Alligator Clips  
*Service Information Sheet*, PN 686953

To contact Fluke, call:

USA: 1-888-99-FLUKE (1-888-993-5853)  
Canada: 1-800-36-FLUKE (1-800-363-5853)  
Europe: +31 402-675-200  
Japan: +81-3-3434-0181  
Singapore: +65-738-5655  
Anywhere in the world: +1-425-446-5500

Visit Fluke's Web site at [www.fluke.com](http://www.fluke.com).